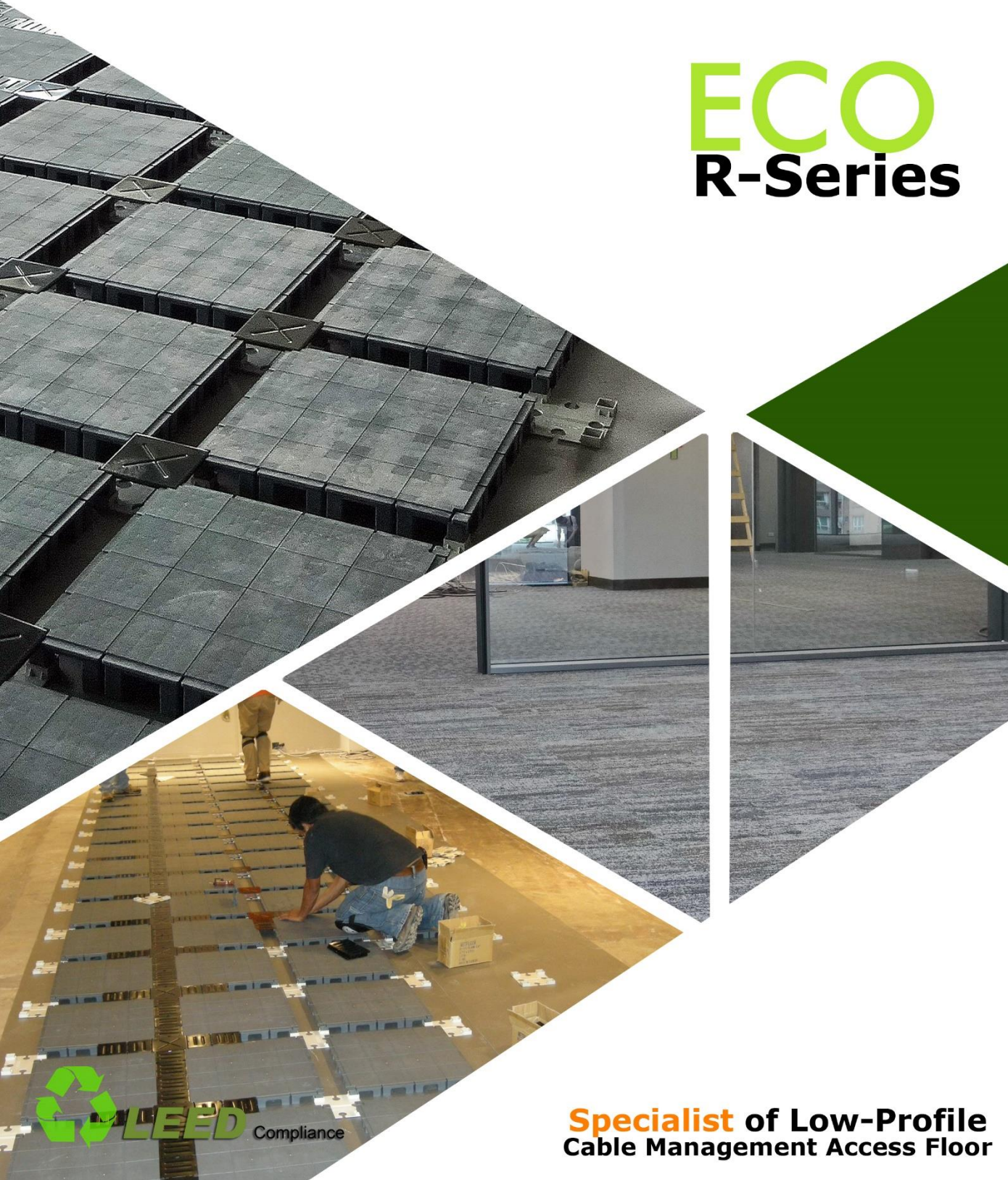


NETFLOOR®

ECO
R-Series



 **LEED** Compliance

**Specialist of Low-Profile
Cable Management Access Floor**

ECO Series

CA700R CA600R CA500R CA400R



a multi-nation company factory office, USA

Netfloor ECO Series is one of the best-selling products among Netfloor product family. ECO series features high cable management capability at low-height, extra-durability, high changeability, easy accessibility, and more important is it's friendly to the environment.

Since its launch in 1996, millions square meters of the ECO series have been installed in variety of applications, from whole class-A office buildings, to small school classrooms. To extend best sales services, the systems are distributed through Netfloor world-wide distribution network in the USA, Canada, Mexico, Brazil, Chile, UK, Spain, Benelux, Japan, HK, Taiwan, Philippines, Australia, New Zealand, and more to be established. In the meantime, there are emerging market opportunities to the ECO series which might be beyond your imagination. Since year 2000, besides of the main market segments in offices and schools, ECO series has been growingly using in the call centers, retail stores, exhibition rooms, and even rental live/exhibition events.

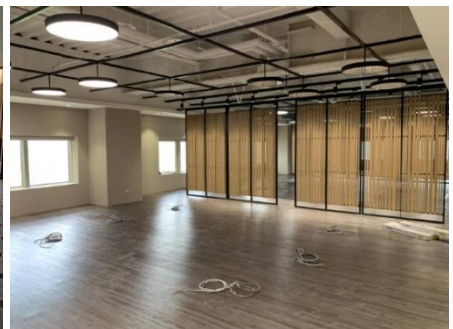
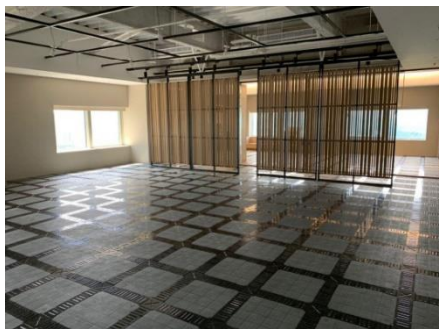


specail exhibition room in National Palace Museum, Taiwan

Global Distribution and Acceptance



an airline reservation center in U.S.A.

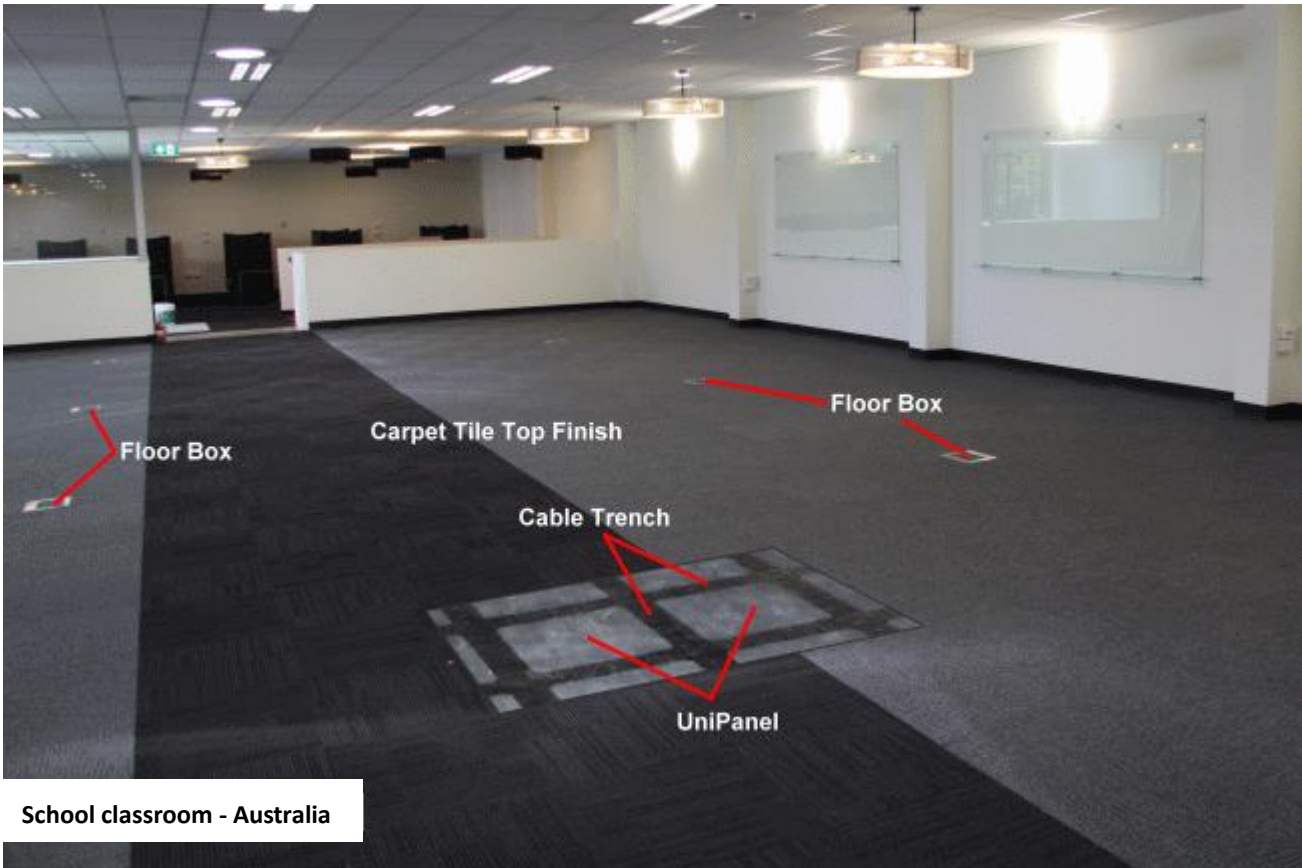


A skyscraper office building in Taiwan /

A multi-nation company offices

Low-Profile at High Capability

Complete height range: 70mm (2.76"), 60mm (2.36"), 50mm (1.97"), 40mm (1.57")



The Unique Grid-Pattern Cable Trench System

Cable Trenches: are formed automatically when installing and connecting Base Connectors onto UniPanels.

Width of Cable Trench: 90 mm width cable trenches surrounding every 600 X 600 mm module, form a grid-pattern that facilitates future moves, additions and changes.

High cable management capacity at low-height

System heights: 40mm (1.57"), 50mm (1.97"), 60mm (2.36"), 70 mm (2.76").

Cable Trench clearance: system height minus 9 mm (0.35"). Cables are routed systematically through the cable trenches, and cavities under the UniPanels providing reserve space for extra distribution.

Free cable extension: Cables extend from cable trenches to connect with service floor boxes or extend through grommets to connect data jacks and power sockets at partition wall bases, conference table, or workstation desk top locations.



High Changeability



Besides providing systematic and high cable carrying capacity, the system provides high changeability where cable re-routing and relocation is expected frequently

1. Systems installed without adhesives to the sub-floors.
2. At the time of re-location, no damage to sub-floor.
3. Cable routing and re-routing is efficient, neat, and with little interference to surrounding workstations.
4. Overnight re-distribution is workable, without interference normal business hours.
5. Minimal costs are incurred during re-layout or re-location.
6. In the event of re-location, all components are 100% re-usable.



Environmental Friendly

The ECO series with its emphases on being environmentally friendly meets the high standard of Green Building Materials. The UniPanel (main panel) is made of recycled poly-propylene. All of the main components of ECO series including UniPanel, Base Connector, Cable Trench steel caps are 100% re-usable and recyclable. The ECO series has been accredited ECO Mark listed in Japan and Taiwan.

Using the ECO series for projects can maximize your LEED credit point for both new buildings and old building renovations.

UniPanel (main panel):

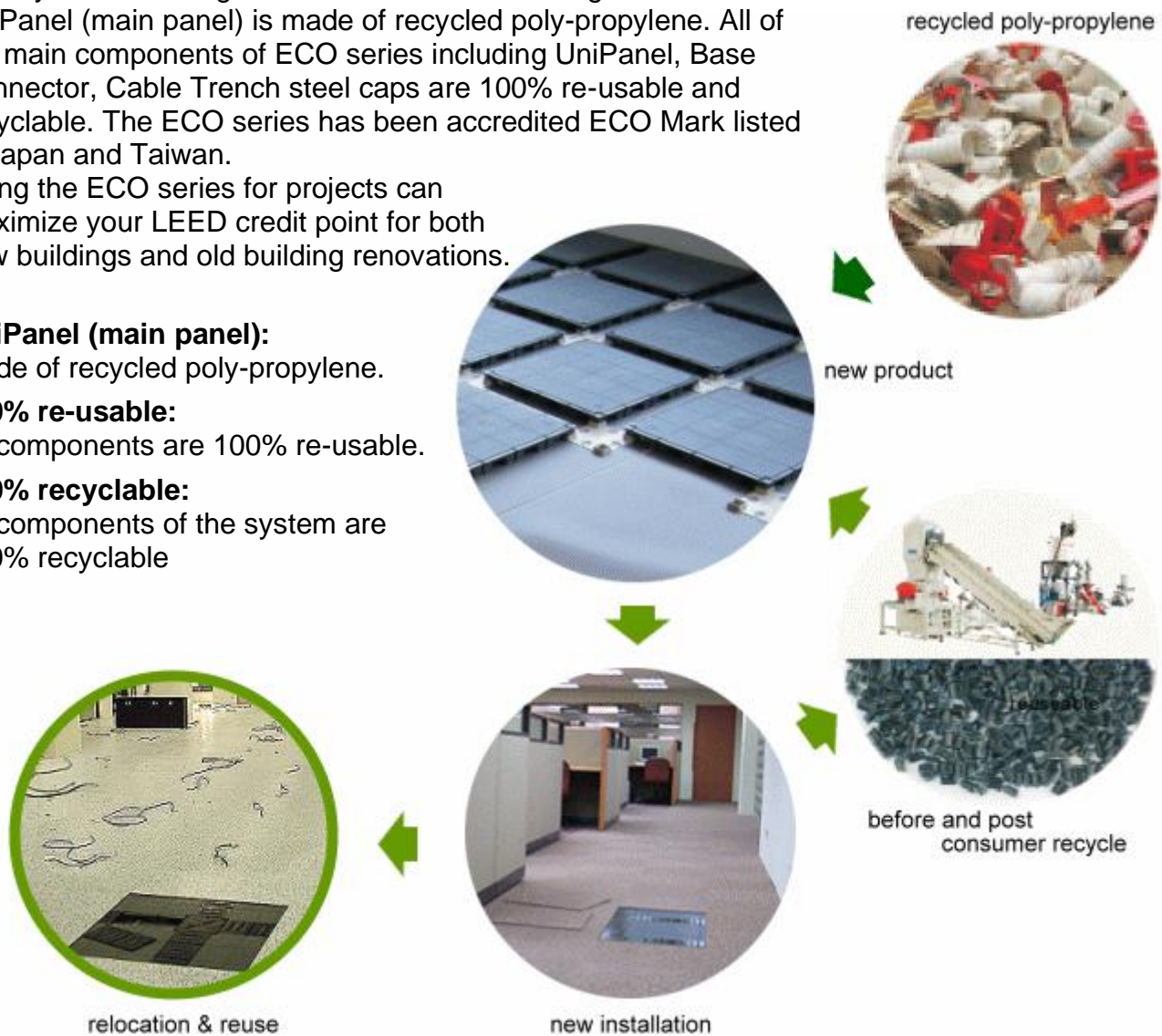
Made of recycled poly-propylene.

100% re-usable:

All components are 100% re-usable.

100% recyclable:

All components of the system are 100% recyclable



Relocation - 100% re-usable

This branch office of a Japanese company in Taiwan, has used the ECO series for 10 years



packing cable trench steel caps



UniPanels and steel caps packed



quick and efficient move-out



transport to the re-located site



LEED (The Leadership in Energy and Environmental Design) is globally recognized certification program for the design, construction, and operation of environment efficiency buildings. Netfloor ECO series access floor systems meets and surpass the LEED Credit Point standards.

LEED Credit	LEED Requirements	Netfloor System Compliance	LEED Points for Your Project
Materials & Resources Credit 4.2	Use materials with recycled content total of 20%, based on cost of the total value of the materials in the project	ECO series CA700R, CA600R, CA500R, CA400R recycled contents are greater than 65% of total system material	Contributes to 2 points
Materials & Resources Credit 5.1/5.2	Regional Materials: 10% extracted, processed & manufactured regionally	ECO series CA700R, CA600R, CA500R, C400R are manufactured in Taichung, Taiwan	Contributes to 1~2 points for projects in Taiwan, Hong Kong, and Macau within 500 miles (800km) of Taichung
Environment Quality Credit 4.1	Low-Emitting Materials: Adhesives & Sealants. Reduce the quantity of indoor air contaminants that are odorous, irritating and/or harmful to the comfort and well-being of installers and occupants	Netfloor ECO series are designed to install without adhesives on the sub-floors, unlike traditional access floor systems which requires adhesives to be applied to the sub-floor	Contributes to 1 points



100% Reusable
100% Recyclable

LEED Compliance
Maximize your LEED Credit Point



ECO mark registered

Recycle – UniPanel (main panel) 100% Recyclable



recycle from job site



crush



crushed poly-propylene pellets



packed and prepare for resin re-manufacturing

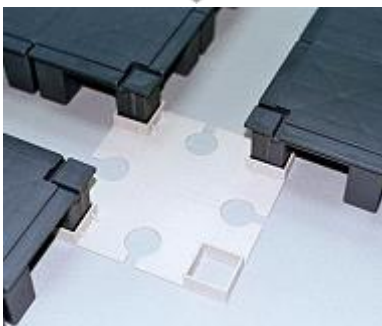
Simplicity

Interlocking configuration, low labor costs

The system consists of 4 main components: UniPanel (main panel), Base Connector, Central Cap, and Flank Cap. During installation, UniPanels are connected by Base Connectors, which automatically forms 90mm (3.54") wide, grid-pattern Cable Trenches. Steel Cable Trench Caps (Central Cap and Flank Cap) are easily installed by hand, to cover the Cable Trenches. The Cable Trench Caps are designed to seat firmly on UniPanel, and protect cables running inside the Cable Trenches, and with high accessibility.



The UniPanel is composed of 16 sub-panels, supported by 64 built-in pedestals, self-standing, and which has extra-ordinary uniform loading performance. .



4-way Base Connector to connect corner pedestals of the UniPanel to automatically form grid-pattern of Cable Trenches



Central Cap and Flank Cap are fully accessible, and inter-changeable. Users can lift the caps easily without using special tools



Continuous interlocking process to lay UniPanels on the floor. It follows the floor contour with no leveling required

Benefits

Retain maximum ceiling height

The ECO series comes in four fixed heights. The unique grid-pattern cable trench system is superb at providing high capacity for cables running inside the trenches, while maintaining the low-profile heights.

	System Height	Cable Trench Width	Cable Trench Clearance
CA700R	70 mm (2.76")	90 mm (3.54")	61 mm (2.40")
CA600R	60 mm (2.36")	90 mm (3.54")	51 mm (2.00")
CA500R	50 mm (1.97")	90 mm (3.54")	41 mm (1.61")
CA400R	40 mm (1.57")	90 mm (3.54")	31 mm (1.22")

Quick Installation, Less Interference

Installation is quick and easy with whether it's done by amateurs or trained contract installers. If renovating, installation may be done room by room or area by area to minimize interference in normal office operation. Full height dry wall or de-mountable partition can be erected on top of the system without interrupting cable distribution.

Cost Effective

Labor saving: Only 1/2 - 2/3 the installation time compared to conventional raised floor. One installer can complete 70 to 90 sq. meters (750 - 950 SF) per working day.

Low initial cost: Save an average of 2/3 material and labor costs when comparing to traditional raised access floor.

Low maintenance costs: Maintenance costs of the ECO series is almost nonexistent.

100 % reusable:

In case of renovation or re-location, all main components, with the exception of the sound attenuation blanket, can be easily removed, and are 100 % reusable.

Users Friendly

Accessibility

Cables are free to extend and connect to open office low partitions, full partitions, workstation, desk top, by just replacing the Flank Cap with Exit-Cap (Flank Cap with 60 mm diameter opening). Lifting and replacing of Trench Caps are very easy, either by hand and/or screwdriver, without special tools or a call to floor contractor.



In case the partition lays on a Cable Trench, drill a hole in the floor track and steel trench cap, then fasten by < 15 mm length blunt-head screw



Full height partition erected on top by fastening floor track onto UniPanel by < 12 mm length wafer-head screw

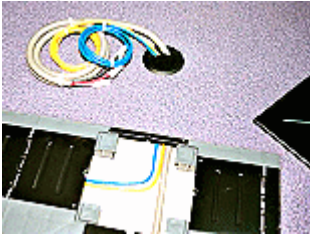


Half-height partition on ECO series Power, data, voice cables distributing under the floor, efficient and limitless

Accommodation

Accommodate all types of workstations, half / full-height partitions, ZoneTeq power distribution systems

1. Routing cables from any point of Cable Trench to extend through Exit-Cap, partition, wall base, desk top, or workstation.



Exit-Cap & Grommet



Exit-Cap & Grommet



Exit-Cap & Grommet to desk top



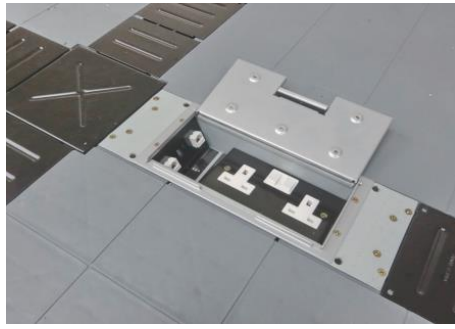
Exit-Cap to full or half height partition

2. Through floor box at any point of Cable Trench

To extend cables connecting to service boxes installed at Cable Trenches by just replacing the Flank Cap



SE403/SE603 for USA, Japan. 🇺🇸 🇯🇵



SE603-BS for UK, Middle East. 🇬🇧 🇲🇪



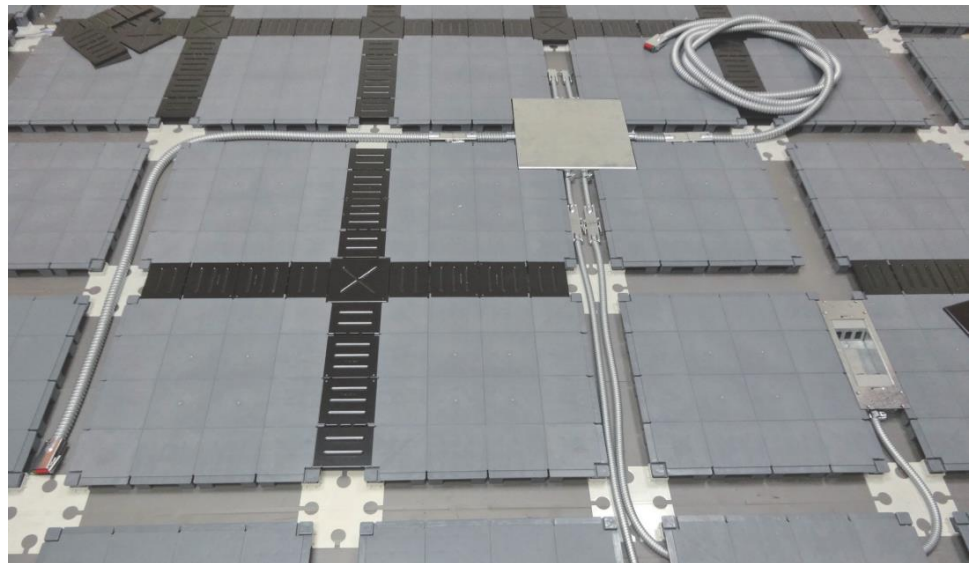
Steel lid topped by carpet tile

3. Incorporate with ZoneTeq Modular Power Distribution System

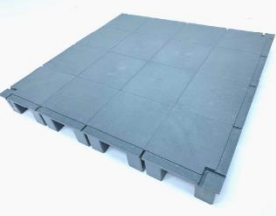
ECO series accommodates Modular power system

Power cables distribute through cable trenches, extend and connect at workstations.

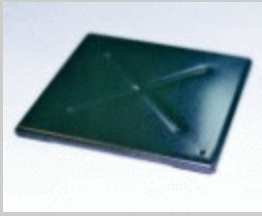
ZoneTeq power distribution boxes are installed by cutting partial of access panels.



Main Components



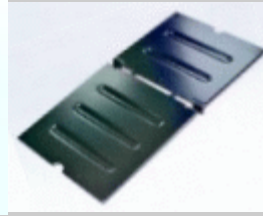
UniPanel (main panel)
 CA711R: 70mm (2.76") H
 CA611R: 60mm (2.36") H
 CA511R: 50mm (1.97") H
 CA411R: 40mm high
 Size: 510mmx510mm (20.08")



Central Cap
 CA414
 Thickness: 2.3mm (0.90")
 Size: 150X150mm (5.91")



Base Connector
 CA-415 / AD615
 Size: 169X169mm (6.65")

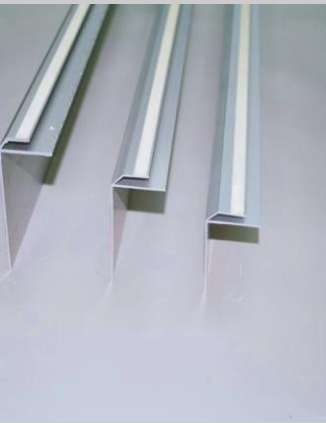


Flank Cap
 AD613
 Thickness: 2.3mm (0.090")
 Size: 223x120 mm



Sound Attenuation Blanket AD-331
 2mm (0.080") thick PU foam, 1 meter width

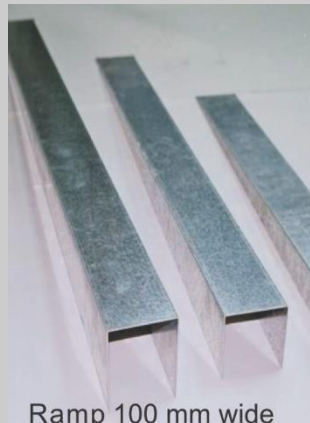
Accessories and floor boxes



Free Standing
 AD721: 70 mm H AD621: 60 mm H
 AD521: 50 mm H CA421: 40 mm H



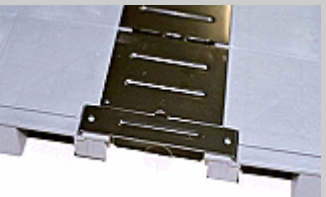
Ramp Rail AD326



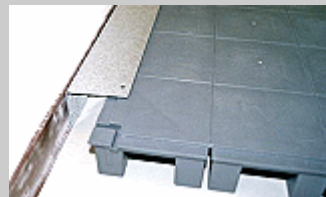
Ramp 100 mm wide
 AD725: 70 mm H AD625: 60 mm H
 AD525: 50 mm H CA425: 40 mm H



Meet ADA regulation: ramp length greater than 12 times to system height



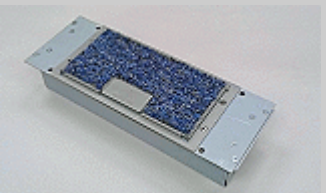
Starting Cap CA428 to conceal gap at beginning of Cable Trenches



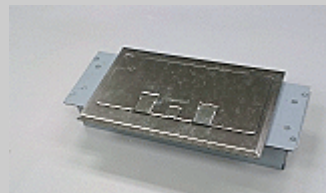
CA423/CA523/CA623/CA723
 Edge Rail for perimeter installation at residual less than 120mm (4.72"), without cutting UniPanel



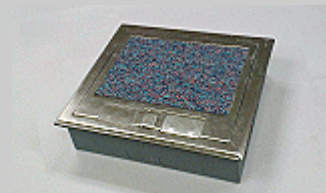
W-type 24" (609mm) wide ramp system at 1:12 and 1:20 ratio
 40mm H: CA425W-480 (480mm L) / CA425W-800 (800mm L)
 60mm H: CA625W-720 (720mm L) / CA625W-1200 (1200mm L)
 70mm H: CA725W-840 (840mm L) / CA725W-1400 (1400mm L)



Floor box SE603: 60mm H
Floor box SE403: 40mm H
 lid: steel
 1 duplex power receptacle,
 3 data jacks faceplates



Floor box SS603: 60mm H
Floor box SS403: 40mm H
 lid: stainless steel
 1 duplex power receptacle,
 3 data jacks faceplates



Floor box SS60: 60mm H
 lid: stainless steel
 2 duplex power receptacles,
 6 data jacks faceplates



Exit-Cap & Grommet
 AD613D6 & AD-518
 Exit-cap: same size as Flank Cap, with 60 mm opening

Specifications

ECO series consists of **UniPanel** (main panel), **Base Connector**, **Central Cap**, **Flank Cap**, **Ramp**, **Sound Attenuation Blanket** and all necessary accessories. ECO series are suitable for used in general office buildings and schools, except areas designed for fire escape or lifts.

Module: 600 mm x 600 mm (23.62" x 23.62")

System	CA700R	CA600R	CA500R	CA400R
Height	70 mm (2.76")	60 mm (2.36")	50 mm (1.97")	40 mm (1.57")
Cable Trench width	90 mm (3.54")	90 mm (3.54")	90 mm (3.54")	90 mm (3.54")
Cable Trench Clearance	61 mm (2.40")	51 mm (2.00")	41 mm (1.61")	31 mm (1.22")
System Weight	15 kg/m ² (3.08 lbs/sq.ft)	14 kg/m ² (2.86 lbs/sq.ft)	13.25 kg/m ² (2.71 lbs/sq.ft)	12.5 kg/m ² (2.56 lbs/sq.ft)

Main Components:

UniPanel: made of fire retard, recycled polypropylene
 CA711R: size 510x510x70 mm (20.08" x 20.08" x 2.76")
 CA611R: size 510x510x60 mm (20.08" x 20.08" x 2.36")
 CA511R: size 510 x 510 x 50 mm (20.08" x 20.08" x 1.97")
 CA411R: size 510 x 510 x 40 mm (20.08" x 20.08" x 1.57")

(*Note: due to UniPanels are made of "recycled" polypropylene, color may vary significantly by different production shift. Quality, such as durability, loading property, is same.)

Base Connector:

Size 169 mm X 169 mm X 15 mm (6.65" X 6.65" X 0.59")
 Made of recycled polycarbonate plus ABS

Central Cap:

Size 150 mm X 150 mm (5.91" X 5.91")
 2.3 mm (0.09") thick steel, re-enforced ribs
 corrosion resistance treatment by electro-deposition

Flank Cap:

Size 223 mm X 120 mm (8.78" X 4.72")
 2.3 mm (0.09") thick steel, re-enforced ribs
 corrosion resistance treatment by electro-deposition.

Sound Attenuation Blanket:

2.0 mm (0.08") thickness IXPE

Accessories

Ramp, Starting Cap, Edge Rail, Alum. Ramp Rail, Alum. Free Standing, Exit-Cap, Edge Trimmer, etc., to support quick and efficient installation at perimeters

Surface floor covering:

Suitable top-finished by commercial carpet tiles: such as Milliken, Interface, Burmatex, ...

Commercial rate vinyl tile/plank: thickness > 4.5 mm
 Hard floorings such as marble, granite, wood, are not suitable for installation on top of ECO series system.

www.netfloor.com

Performance

Fire Retard

UniPanel: Meets NFPA 253 class A rating as tests in accordance with ASTM E-648 Critical Radiant Flux.

Meets BS 476, Part 7, B2

Concentration Load:

Test in accordance with CISCA 1" indenter at midpoint of edge (weakest point) of sub-panel, and caps, and at 2.5 mm (0.1") deflection

UniPanel CA711R: greater than 450 psi

UniPanel CA611R: greater than 450 psi

UniPanel CA511R: greater than 400 psi

UniPanel CA411R: greater than 400 psi

Central Cap: greater than 650 psi

Flank Cap: greater than 650 psi

Concentrate Ultimate Load of UniPanels:

greater than 500 psi

Concentrate Ultimate Load of Caps:

greater than 1300 psi

Uniform Distribution Load:

at 1.5 mm (0.06") deflection:

All systems: CA700R / CA600R / CA500R / CA400R:
 greater than 500 psf (on 600X600 mm module)

Uniform Ultimate Load:

All systems CA700R / CA600R / CA500R / CA400R:
 2000 psf undamaged (on 600X600 mm module)

Warranty: 10 years warranty (except when product is subject to abuse, negligence, abnormal use and not in compliance with Netfloor's installation instruction).

In pursuing continuous quality improvement, the manufacturer reserves the rights to update specifications without prior notice.

NETFLOOR is a global trademark, and has been registered in more than 40 countries.

Patent granted -

USA: Invention Patent No. 5.630.300

Japan: Utility Model No. 3032638

U.K. Invention Patent No. 2309042

Australia: Invention Patent No. 679415

France: Invention Patent No. 97 99 255

China: Utility Model No. ZL 02 2 91689X

Taiwan: Invention Patent No. 127700

patent pending: all other industrial nations



a product division of Netfloor, Inc.

January, 2021